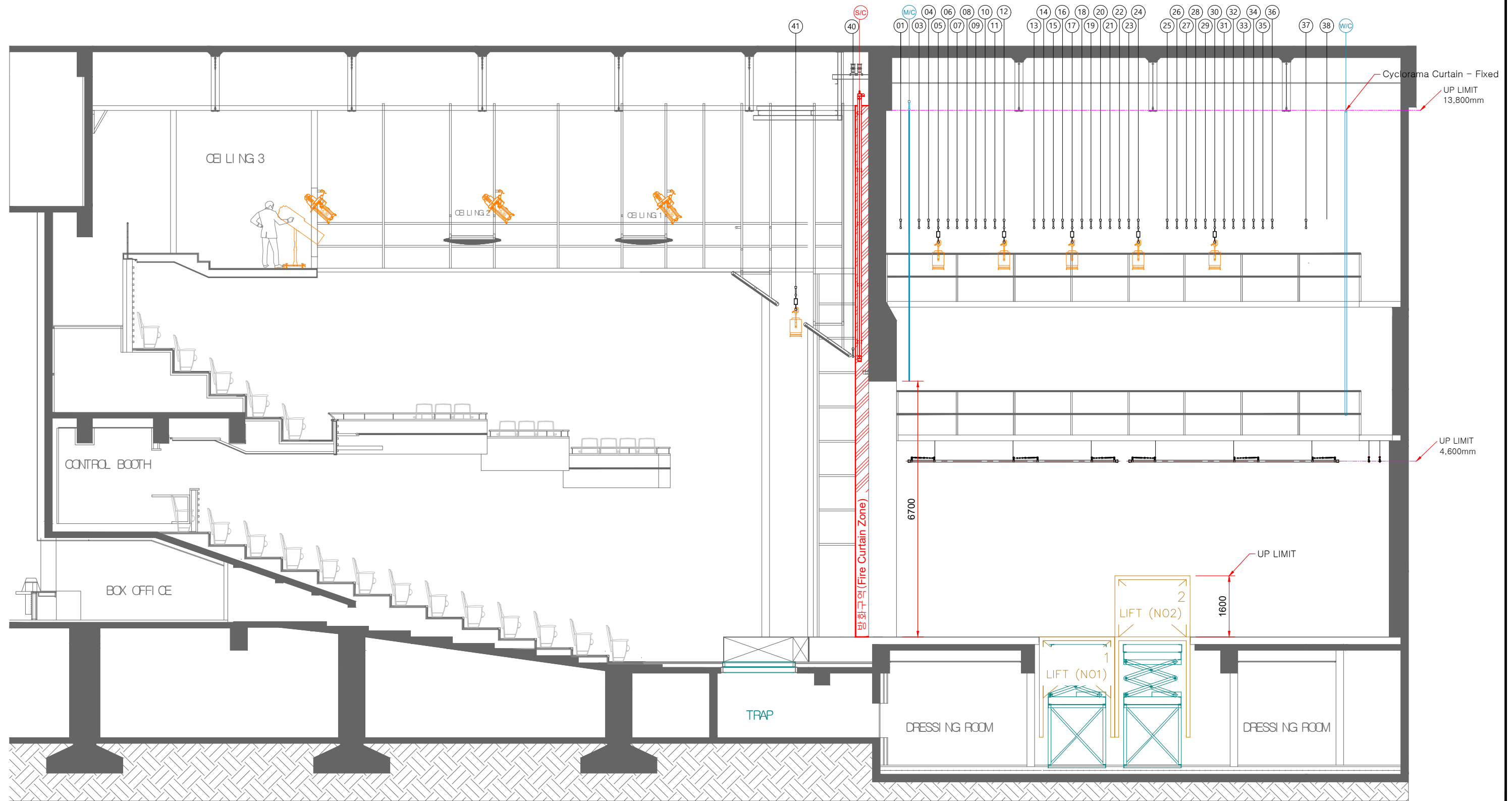


극장 무대 설비 및 사양  
THEATER TECHNICAL SPECIFICATION

번호 No.	설비명 EQUIPMENT	규격 DIMENSION	수량 QUANTITY	작동속도 SPEED	비고 REMARK
01	프로시니엄 (Proscenium)	12,000W x 6,700H	1 EA		
02	안전막 (Safety Curtain)	13,000W x 7,000H	1 EA	-	Emergency - 25sec Down
03	면막 (Main Curtain) - #02	14,000W x 7,100H	1 EA	0.1 ~ 60M/Min	Max. 700kg
04	장치봉 (Fly Set Batten) - #40, 41	15,000L (∅48.6mm)	2 EA	0.1 ~ 30M/Min	Max. 300kg
05	장치봉 (Fly Set Batten)	15,000L (∅48.6mm)	32 EA	0.1 ~ 60M/Min	Max. 450kg
06	측면 장치봉 (Side Fly Batten)	5,500L (∅48.6mm)	6 EA	10M/Min	Max. 200kg
07	후면 장치봉 (Up Stage Fly Batten)	10,000L (∅48.6mm)	2 EA	10M/Min	Max. 200kg
08	조명봉 (Light Batten)	15,000L (∅48.6mm)	5 EA	0.1 ~ 60M/Min	Max. 350kg
09	하늘막 (White-Cyclorama Curtain)	15,000W x 8,000H	1 EA	0.1 ~ 60M/Min	
10	머리막 (Border Curtain)	15,000W x 3,000H	6 EA		
11	다리막 (Leg Curtain)	5,000W x 8,000H	6 SET		
12	주무대 리프트 (Main Stage Lift)	10,000W x 2,000D	2 EA	53mm/Sec	Max. 2ton
13	무대 바닥 (Stage Floor)	Permissible load per 1m <sup>2</sup>	-	-	Max. 400kg

국립극장 달오름  
THE NATIONAL THEATER OF KOREA DALOREUM THEATER



NOTE.

 <b>국립극장</b> <small>The National Theater of Korea</small>	
PLAN. <b>달오름극장 단면도</b>	
DATE 2023.06.26 SCALE A3 - 1/100	
THEATER 달오름극장	NO. <b>2</b>