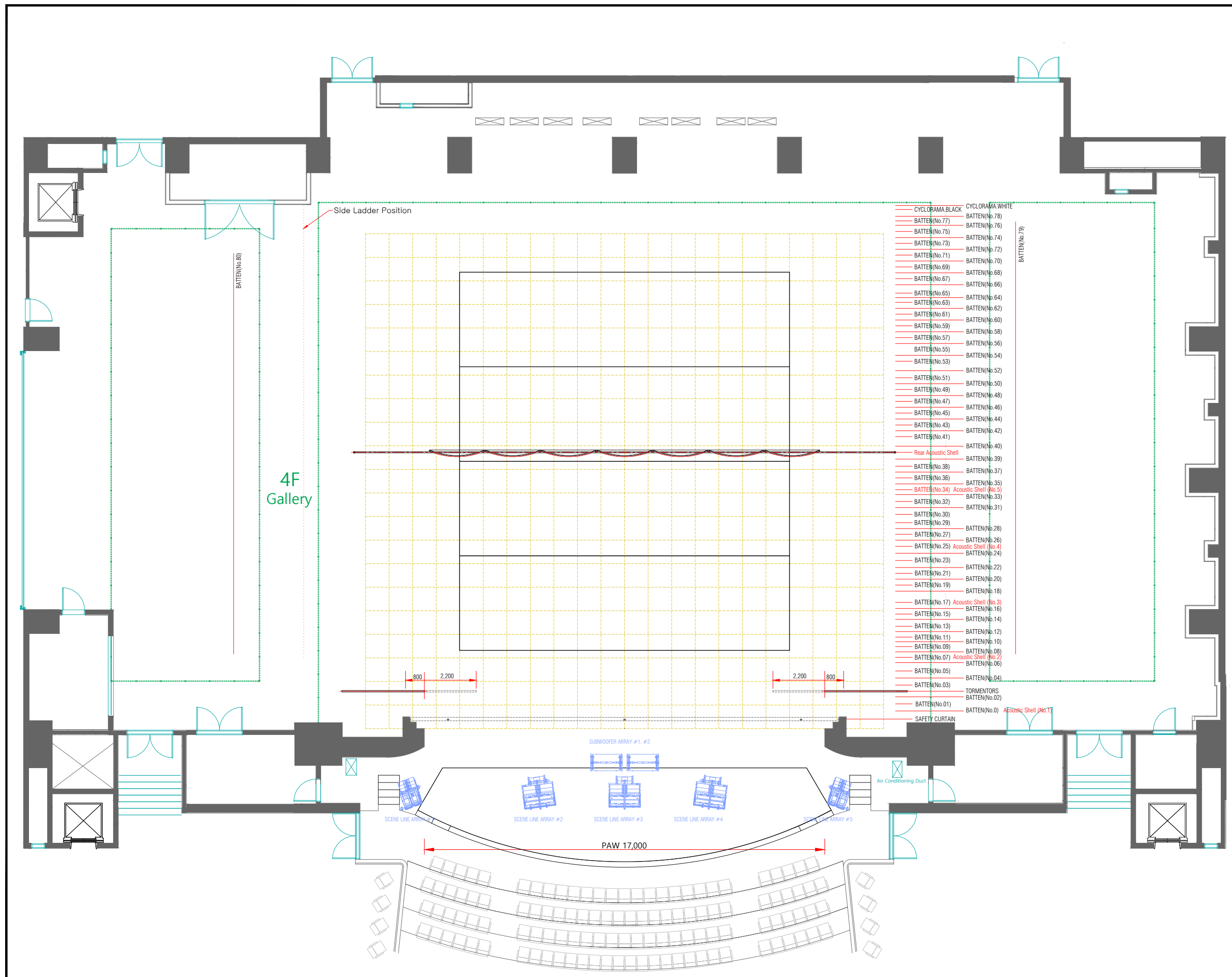


극장 무대 설비 및 사양  
THEATER TECHNICAL SPECIFICATION

번호 No.	설비명 EQUIPMENT	규격 DIMENSION	수량 QUANTITY	작동속도 SPEED	비고 REMARK
01	프로시니엄 (Proscenium)	17,000W x 12,000H	1 EA		
02	안전막 (Safety Curtain)	18,000W x 13,000H	1 EA	0.1 ~ 20M/Min	
03	옆 조리개 (Tormentor)	3,500W x 13,000H	1 SET		
04	장치봉 (Fly Set Batten) - 30kW (Batten No.01)	23,000L (∅48.6mm)	1 EA	0.1 ~ 90M/Min	Max. 1,200Kg
05	장치봉 (Fly Set Batten) - 18.5kW	23,000L (∅48.6mm)	78 EA	0.1 ~ 90M/Min	Max. 600kg
06	하늘막 (Black-Cyclorama Curtain)	23,000W x 15,000H	1 EA	0.1 ~ 60M/Min	
07	하늘막 (White-Cyclorama Curtain)	23,000W x 15,000H	1 EA	0.1 ~ 60M/Min	
08	머리막 (Border Curtain)	23,000W x 6,000H	6 EA		
09	다리막 (Leg Curtain)	5,000W x 15,000H	6 SET		
10	측면 장치봉 (Side Fly Set Batten)	18,000L	2 EA	0.1 ~ 20M/Min	Max. 600kg (좌,우 1개 씩)
11	측면 조명 사다리 (Side Lighting ladder)	1,200W x 3,600H	10 EA	10M/Min	Max. 200kg (좌,우 5개 씩)
12	후면 음향반사판 (Rear Acoustic Shell)	16,600W x 7,000H	1 EA	0.1 ~ 9M/Min	
13	오케스트라 리프트 (Orchestra Lift)	17,557W x 3,990D	1 EA	0.1 ~ 6M/Min	Max. 5 ton
14	주무대 리프트 (Main Stage Lift)	14,000W x 4,000D	4 EA	0.1 ~ 6M/Min	Max. 10 ton
15	NO.1 이동객석 (Seat Wagon)	4,745W x 3,227D	2 EA		
16	NO.2 이동객석 (Seat Wagon)	9,545W x 3,850D	1 EA		
17	무대 바닥 (Stage Floor)	Permissible load per 1m <sup>2</sup>	-	-	Max. 400kg

국립극장 해오름  
THE NATIONAL THEATER OF KOREA HAEOREUM GRAND THEATER

NOTE.



- CYCLOPAMA BLACK BATTEN(No.78)
- BATTEN(No.77) BATTEN(No.76)
- BATTEN(No.75) BATTEN(No.74)
- BATTEN(No.73) BATTEN(No.72)
- BATTEN(No.71) BATTEN(No.70)
- BATTEN(No.69) BATTEN(No.68)
- BATTEN(No.67) BATTEN(No.66)
- BATTEN(No.65) BATTEN(No.64)
- BATTEN(No.63) BATTEN(No.62)
- BATTEN(No.61) BATTEN(No.60)
- BATTEN(No.59) BATTEN(No.58)
- BATTEN(No.57) BATTEN(No.56)
- BATTEN(No.55) BATTEN(No.54)
- BATTEN(No.53) BATTEN(No.52)
- BATTEN(No.51) BATTEN(No.50)
- BATTEN(No.49) BATTEN(No.48)
- BATTEN(No.47) BATTEN(No.46)
- BATTEN(No.45) BATTEN(No.44)
- BATTEN(No.43) BATTEN(No.42)
- BATTEN(No.41) BATTEN(No.40)
- Rear Acoustic Shell BATTEN(No.39)
- BATTEN(No.38) BATTEN(No.37)
- BATTEN(No.36) BATTEN(No.35)
- BATTEN(No.34) Acoustic Shell (No.5) BATTEN(No.33)
- BATTEN(No.32) BATTEN(No.31)
- BATTEN(No.30) BATTEN(No.28)
- BATTEN(No.29) BATTEN(No.26)
- BATTEN(No.27) BATTEN(No.25) Acoustic Shell (No.4) BATTEN(No.24)
- BATTEN(No.23) BATTEN(No.22)
- BATTEN(No.21) BATTEN(No.20)
- BATTEN(No.19) BATTEN(No.18)
- BATTEN(No.17) Acoustic Shell (No.3) BATTEN(No.16)
- BATTEN(No.15) BATTEN(No.14)
- BATTEN(No.13) BATTEN(No.12)
- BATTEN(No.11) BATTEN(No.10)
- BATTEN(No.09) BATTEN(No.08)
- BATTEN(No.07) Acoustic Shell (No.2) BATTEN(No.06)
- BATTEN(No.05) BATTEN(No.04)
- BATTEN(No.03) TORMENTORS BATTEN(No.02)
- BATTEN(No.01) BATTEN(No.0) Acoustic Shell (No.1)



PLAN.  
**해오름극장 평면도**  
 DATE 2022.02.08 SCALE A3 1/150  
 THEATER NO.  
**해오름극장 1**